

PRODUCT INFORMATION PACKET

Model No: 5KCR49WN0295U

Catalog No: C1295

1.5 HP Auger Drive Motor, 1 phase, 1800 RPM, 115/208-230 V, 56NY Frame, TEFC
Auger Drive Motors



Regal and Marathon are trademarks of Regal Rexnord Corporation or one of its affiliated companies.
©2021 Regal Rexnord Corporation, All Rights Reserved. MC017097E



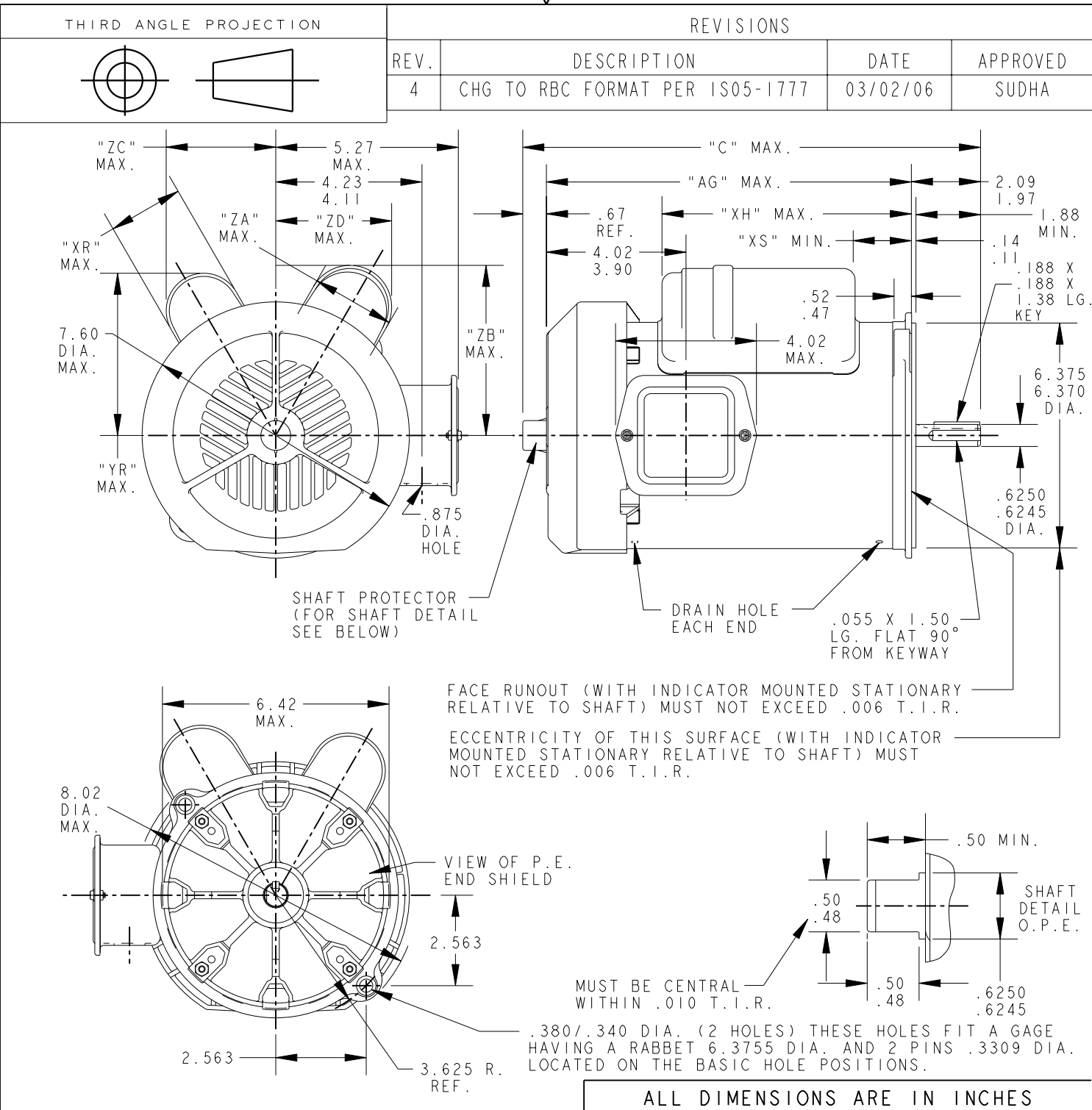
Nameplate Specifications

Output HP	1.50 Hp	Output KW	1.1 kW
Frequency	60 Hz	Voltage	115/208-230 V
Current	14.5,7.1-7.3 A	Speed	1725 rpm
Service Factor	1.15	Phase	1
Efficiency	73.6 %	Power Factor	0
Duty	Continuous	Insulation Class	B
KVA Code	K	Frame	56NY
Enclosure	Totally Enclosed Fan Cooled	Thermal Protection	MAN
Ambient Temperature	40 °C	Drive End Bearing Size	6203
Opp Drive End Bearing Size	6203	UL	Recognized
CSA	Yes	CE	N
Number of Speeds	1		

Technical Specifications

Electrical Type	Capacitor Start Capacitor Run	Starting Method	SM
Poles	4	Rotation	Counterclockwise/Clockwise
Mounting	Round	Motor Orientation	ANY
Drive End Bearing	BALL	Opp Drive End Bearing	Ball
Frame Material	Rolled Steel	Overall Length	14.51 in
Frame Length	8.99 in	Shaft Diameter	0.630 in
Shaft Extension	1.88 in		
Outline Drawing	52A107769P1	Connection Drawing	52A110583AE

This is an uncontrolled document once printed or downloaded and is subject to change without notice. Date Created:10/06/2021

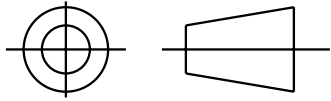


I	KCR	49	56NY	14.51	11.73	7.77	4.68	2.15	2.02	2.72	5.27	3.20	3.66	8.99
P	TYPE	GE SIZE	NEMA FR.	"C"	"AG"	"XH"	"YR"	"XR"	"XS"	"ZA"	"ZB"	"ZC"	"ZD"	MIN. SHELL

	SIGNATURES	DATE		REGAL-BELOIT CORPORATION					
	MODEL	M.D. PAPE		11/22/91	TITLE OUTLINE SPECIAL PURPOSE MOTOR TEFC - BALL BEARING - 2 LUG FLANGE FMF: 5KCR49UN0079U				
	DETAIL	.		.					
	CHECKED	.		.					
FOR ADDITIONAL INFO REFER TO:	MFG	.	.	SIZE DRAWING 52A107769					
APPLIED PRACTICES	QUALITY	.	.						REV 4
DIMENSIONS ARE IN INCHES	ISSUED	M.A.M.	07/07/94						
MATERIAL	SOLID MODEL: 52A107769		SCALE: 0.250	REF. No.:	SHEET 1 of 1				

SHEET 1
REV 0
52A110583AE
SIZE DRAWING NO. A

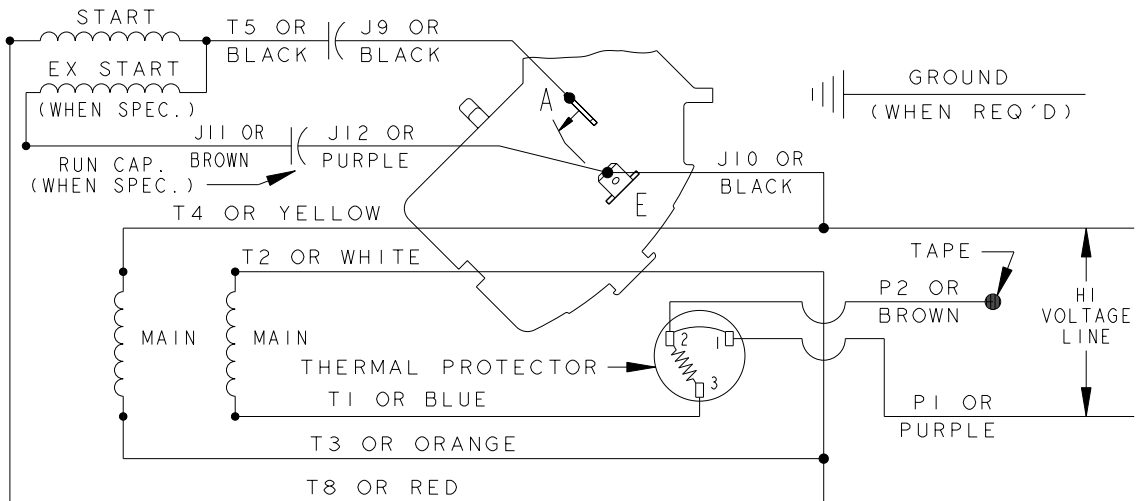
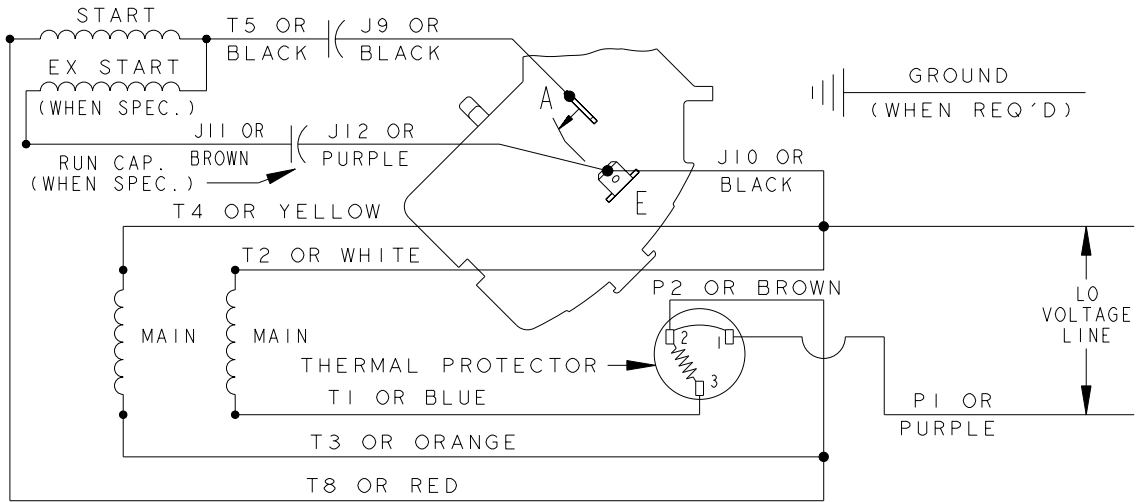
THIRD ANGLE PROJECTION



REVISIONS

REV.	DESCRIPTION	DATE	APPROVED

CW ROTATION SHAFT END - DUAL VOLTAGE
TYPE CAP START WITH THERMAL PROTECTOR



- NOTE#1 - TO REVERSE ROTATION, INTERCHANGE T8 RED AND J10 BLACK LEADS
- NOTE#2 - WHEN MORE THAN ONE CAPACITOR IS USED, CONNECT IN PARALLEL.
- NOTE#3 - 115D958ABP5 - HIGH CURRENT CONTACTS.

REF. - 52A105383BA
SWITCH - 115D958AB
CONNECTION LABEL - 52X332912

SIGNATURES	DATE
MODEL MADHU	10/29/09
DETAIL
CHECKED
ENGRG
MFG
QUALITY
ISSUED MADHU	10/29/09



REGAL-BELOIT CORPORATION

TITLE CONNECTION DIAGRAM

FOR ADDITIONAL INFO REFER TO:
 APPLIED PRACTICES .
 DIMENSIONS ARE IN INCHES ✓
 MATERIAL .

SIZE A	DRAWING	52A110583AE	REV 0
SCALE: 1.000	REF. No: .	SHEET 1 of 1	