

PRODUCT INFORMATION PACKET



Model No: 122192.00
Catalog No: 122192.00
1 HP Washdown Motor, 3 phase, 1800 RPM, 208-230/460 V, 143TC Frame, TENV
Brake Motors



Regal and Leeson are trademarks of Regal Rexnord Corporation or one of its affiliated companies.
©2021 Regal Rexnord Corporation, All Rights Reserved. MC017097E



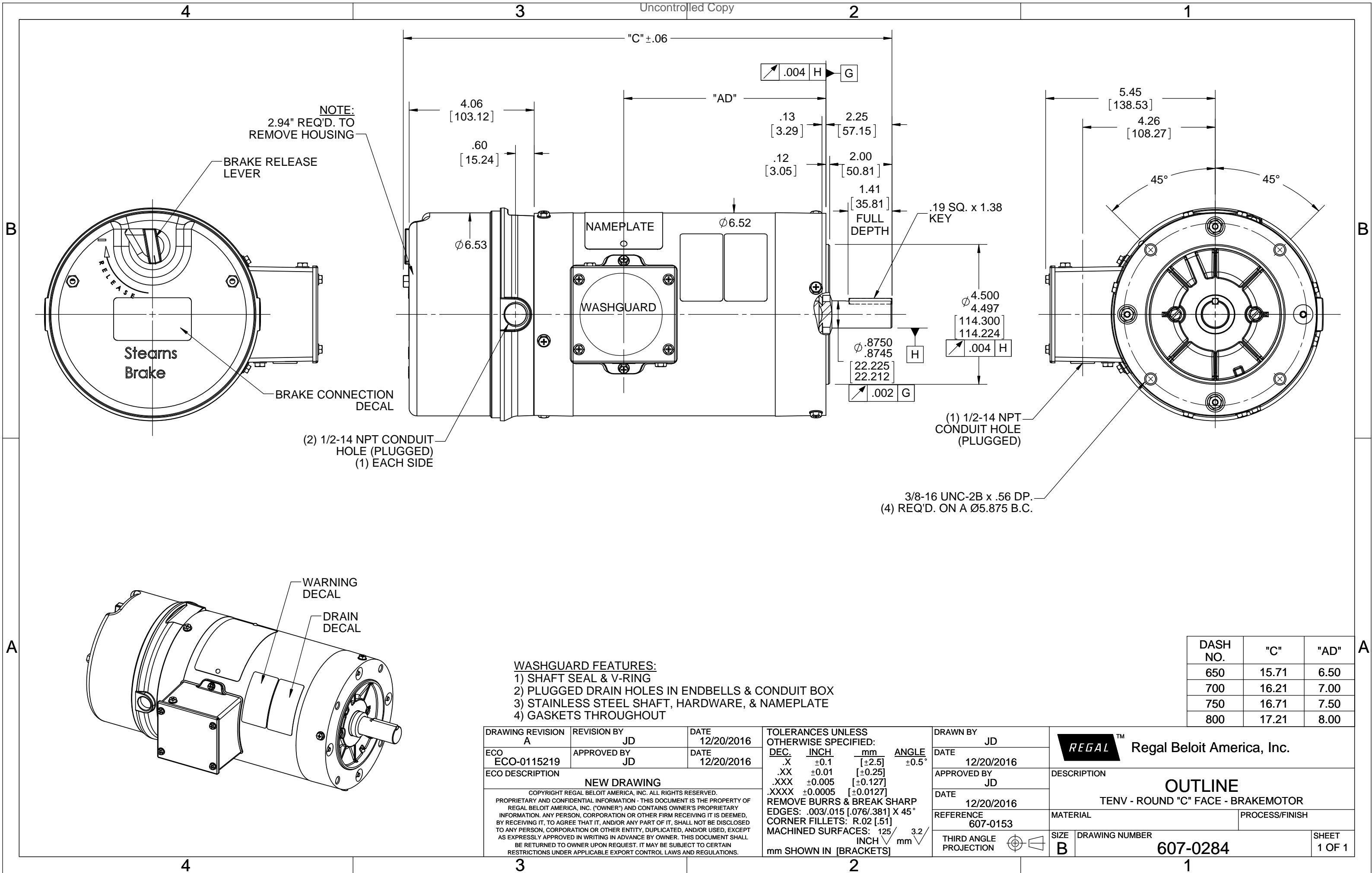


Nameplate Specifications

Output HP	1 Hp	Output KW	0.75 kW
Frequency	60 Hz	Voltage	208-230/460 V
Current	3.0-2.8/1.4 A	Speed	1750 rpm
Service Factor	1.15	Phase	3
Efficiency	85.5 %	Power Factor	77.7
Duty	Continuous	Insulation Class	F
Design Code	B	KVA Code	L
Frame	143TC	Enclosure	Totally Enclosed Non Ventilated
Thermal Protection	Thermostats (N/C)	Ambient Temperature	40 °C
Drive End Bearing Size	6205	Opp Drive End Bearing Size	6203
UL	Recognized	CSA	Y
CE	Y	IP Code	55
Number of Speeds	1		

Technical Specifications

Electrical Type	Squirrel Cage Induction Run	Starting Method	Across The Line
Poles	4	Rotation	Reversible
Resistance Main	0 Ohms	Mounting	Rigid Base
Motor Orientation	Horizontal	Drive End Bearing	Ball
Opp Drive End Bearing	Ball	Frame Material	Rolled Steel
Shaft Type	T	Overall Length	17.21 in
Frame Length	8.00 in	Shaft Diameter	0.875 in
Shaft Extension	2.25 in	Assembly/Box Mounting	F1 ONLY
Connection Drawing	005010.28	Outline Drawing	607-0284-800



NOTE:
2.94" REQ'D. TO
REMOVE HOUSING

BRAKE RELEASE
LEVER

Stearns
Brake

BRAKE CONNECTION
DECAL

(2) 1/2-14 NPT CONDUIT
HOLE (PLUGGED)
(1) EACH SIDE

NAMEPLATE

WASHGUARD

.19 SQ. x 1.38
KEY

(1) 1/2-14 NPT
CONDUIT HOLE
(PLUGGED)

3/8-16 UNC-2B x .56 DP.
(4) REQ'D. ON A Ø5.875 B.C.

WARNING
DECAL

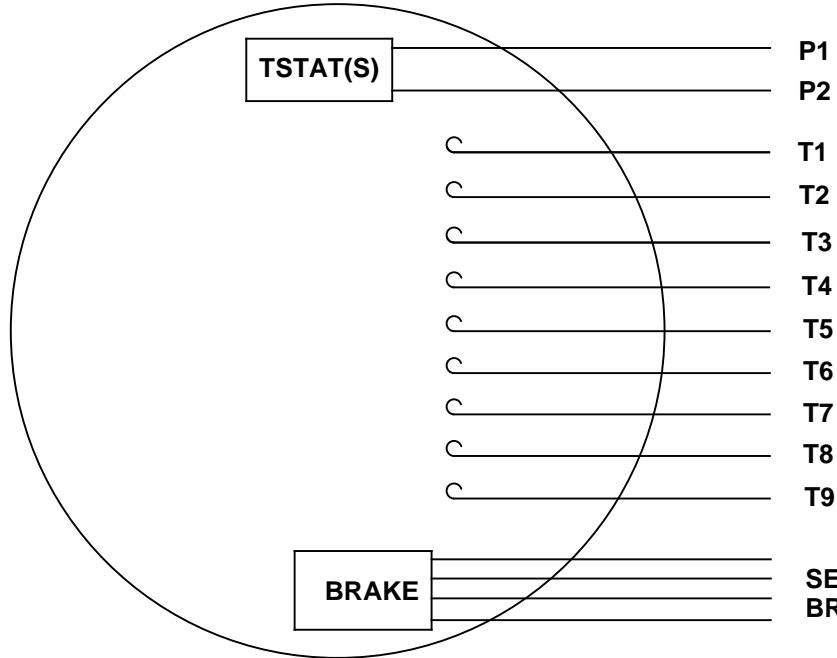
DRAIN
DECAL

- WASHGUARD FEATURES:**
- 1) SHAFT SEAL & V-RING
 - 2) PLUGGED DRAIN HOLES IN ENDBELLS & CONDUIT BOX
 - 3) STAINLESS STEEL SHAFT, HARDWARE, & NAMEPLATE
 - 4) GASKETS THROUGHOUT

DASH NO.	"C"	"AD"
650	15.71	6.50
700	16.21	7.00
750	16.71	7.50
800	17.21	8.00

DRAWING REVISION A	REVISION BY JD	DATE 12/20/2016	TOLERANCES UNLESS OTHERWISE SPECIFIED: DEC. INCH mm ANGLE .X ±0.1 [±2.5] ±0.5° .XX ±0.01 [±0.25] .XXX ±0.005 [±0.127] .XXXX ±0.0005 [±0.0127]	DRAWN BY JD	Regal Beloit America, Inc.
ECO ECO-0115219	APPROVED BY JD	DATE 12/20/2016	REMOVE BURRS & BREAK SHARP EDGES: .003/.015 [0.076/.381] X 45° CORNER FILLETS: R.02 [.51] MACHINED SURFACES: 125 3.2 INCH mm	DATE 12/20/2016	
ECO DESCRIPTION NEW DRAWING			REFERENCE 607-0153	DESCRIPTION OUTLINE TENV - ROUND "C" FACE - BRAKEMOTOR	
COPYRIGHT REGAL BELOIT AMERICA, INC. ALL RIGHTS RESERVED. PROPRIETARY AND CONFIDENTIAL INFORMATION - THIS DOCUMENT IS THE PROPERTY OF REGAL BELOIT AMERICA, INC. ("OWNER") AND CONTAINS OWNER'S PROPRIETARY INFORMATION. ANY PERSON, CORPORATION OR OTHER FIRM RECEIVING IT IS DEEMED BY RECEIVING IT, TO AGREE THAT IT, AND/OR ANY PART OF IT, SHALL NOT BE DISCLOSED TO ANY PERSON, CORPORATION OR OTHER ENTITY, DUPLICATED, AND/OR USED, EXCEPT AS EXPRESSLY APPROVED IN WRITING IN ADVANCE BY OWNER. THIS DOCUMENT SHALL BE RETURNED TO OWNER UPON REQUEST. IT MAY BE SUBJECT TO CERTAIN RESTRICTIONS UNDER APPLICABLE EXPORT CONTROL LAWS AND REGULATIONS.			THIRD ANGLE PROJECTION	MATERIAL PROCESS/FINISH	
				SIZE B	DRAWING NUMBER 607-0284
				SHEET 1 OF 1	

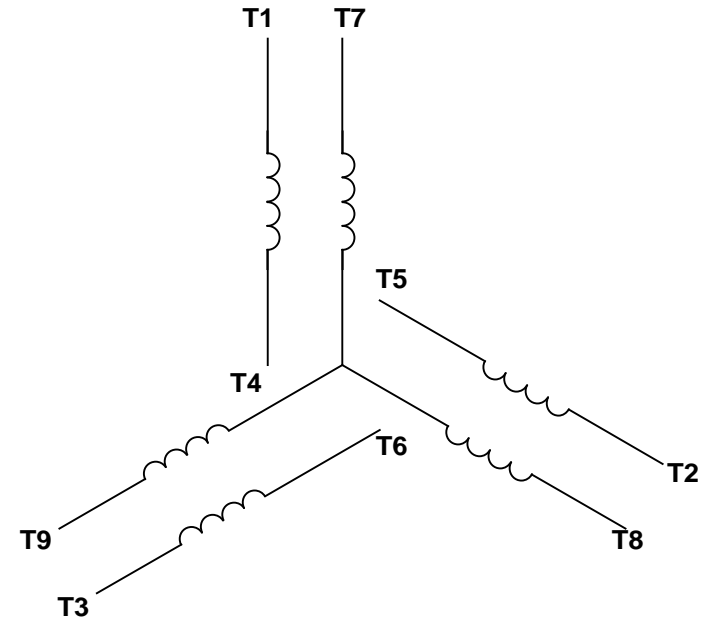
VIEW FROM OUTSIDE OF MOTOR AT SWITCH END.



P1
P2
T1
T2
T3
T4
T5
T6
T7
T8
T9

SEE TABLE FOR
BRAKE CONNECTIONS


LINE LEADS



RBC PROPRIETARY AND CONFIDENTIAL INFORMATION
This document is the property of REGAL BELOIT CORPORATION ("RBC") including its subsidiaries and divisions and contains proprietary information of RBC. This document is loaned on the express condition that neither it nor the information contained therein shall be disclosed to others without the express written consent of RBC, and that the information shall be used by the recipient only as approved expressly by RBC. This document shall be returned to RBC upon its request. This document may be subject to certain restrictions under U.S. export control laws and regulations.

BRAKE CONNECTION						
VOLTAGE	STERNS BRAKE			DINGS BRAKE		
	L1	L2	Join	L1	L2	Join
HIGH	1(RED)	2(RED)	3(BLACK) 4(BLACK)	2(BLACK)	4(YELLOW)	1(YELLOW) 3(BLACK)
LOW	1(RED) 3(BLACK)	2(RED) 4(BLACK)	-----	2(BLACK) 3(BLACK)	1(YELLOW) 4(YELLOW)	-----

VOLTAGE	L1	L2	L3	JOIN & INSULATE
HIGH	T1	T2	T3	(T4, T7) (T5, T8) (T6, T9)
LOW	T1, T7	T2, T8	T3, T9	T4, T5, T6

				TOLERANCES UNLESS SPECIFIED		 ELECTRIC MOTORS GEARMOTORS AND DRIVES	DRAWN RDW 09/14/99	
				DEC	INCHES		CHK	
				.X	±.1		APPR	
				.XX	±.01		SCALE	1:1
				.XXX	±.005		REF	005010-15
--	REDRAWN IN SOLIDWORKS	VJB 02/08/11		.XXXX	±.0005	MAT'L DECAL - 004014 DECAL - 080088	FMF	
NO	REVISION	BY & DATE	CHK	ANG	±1/2°	FINISH CAMFAB INC.	PAGE	OF
THIRD ANGLE PROJECTION			RFP	PREV	SIZE	DRAWING NO	REV	
			NETWORK FILE NAME 00501028			A	005010-28	--



CERTIFICATION DATA SHEET

**1051 CHEYENNE AVE.
GRAFTON, WI 53024
PH. 262-377-8810**

CONN. DIAGRAM: 005010.28

CATALOG #: 122192.00

OUTLINE: 607-0284-800

MOUNTING: F1 ONLY

WINDING #: T634471 NR 3 B

TYPICAL MOTOR PERFORMANCE DATA

HP	kW	SYNC. RPM	F.L. RPM	FRAME	ENCLOSURE	KVA CODE	DESIGN
1	0.75	1800	1750	143TC	TENV	L	B

PH	Hz	VOLTS	AMPS	START TYPE	DUTY	INSL	S.F.	AMB°C
3	60	208-230/460	3-2.8/1.4	ACROSS THE LINE	CONTINUOUS	F4	1.15	40

FULL LOAD EFF:	85.5	3/4 LOAD EFF:	86.9	1/2 LOAD EFF:	85.1	GTD. EFF		ELEC. TYPE	
FULL LOAD PF:	77.7	3/4 LOAD PF:	70.3	1/2 LOAD PF:	57.9	0		SQ CAGE IND RUN	

F.L. TORQUE	LOCKED ROTOR AMPS	L.R. TORQUE	B.D. TORQUE	F.L. RISE°C
48.04 OZ-FT	24.9 / 12.4	166 OZ-FT 346 %	206 OZ-FT 429 %	-

SOUND PRESSURE @ 3 FT.	SOUND POWER	ROTOR WK^2	MAX. WK^2	SAFE STALL TIME	STARTS / HOUR	APPROX. MOTOR WGT
0 dBA	10 dBA	0 LB-FT^2	0 LB-FT^2	0 SEC.	0	0 LBS.

***** SUPPLEMENTAL INFORMATION *****

DE BRACKET TYPE	ODE BRACKET TYPE	MOUNT TYPE	ORIENTATION	SEVERE DUTY	HAZARDOUS LOCATION	DRIP COVER	SCREENS	PAINT
C-FACE	BRAKE	RIGID	HORIZONTAL	FALSE	NONE	FALSE	NONE	WHITE - LEESON (EPOXY)

BEARINGS		GREASE	SHAFT TYPE	SPECIAL DE	SPECIAL ODE	SHAFT MATERIAL	FRAME MATERIAL
DE	ODE						
BALL	BALL	POLYREX EM	T	NONE	NONE	303 STAINLESS (C-501)	ROLLED STEEL
6205	6203						

THERMO-PROTECTORS				THERMISTORS	CONTROL	SPACE HEATERS
THERMOSTATS	PROTECTORS	WDG RTDs	BRG RTDs			
TSTATS (N/C)	NOT	NONE	NONE	NONE	FALSE	NONE VOLTS

*
N
O
T
E
S

INVERTER TORQUE: NONE
INV. HP SPEED RANGE: NONE
ENCODER: NONE NONE NONE NONE NONE PPR
BRAKE: REGAL SUPPLIED AND MOUNT NONE
STEARNS P/N 004225.80 56,000 NEMA 4 6 FT-LB 230/460 V 60 Hz



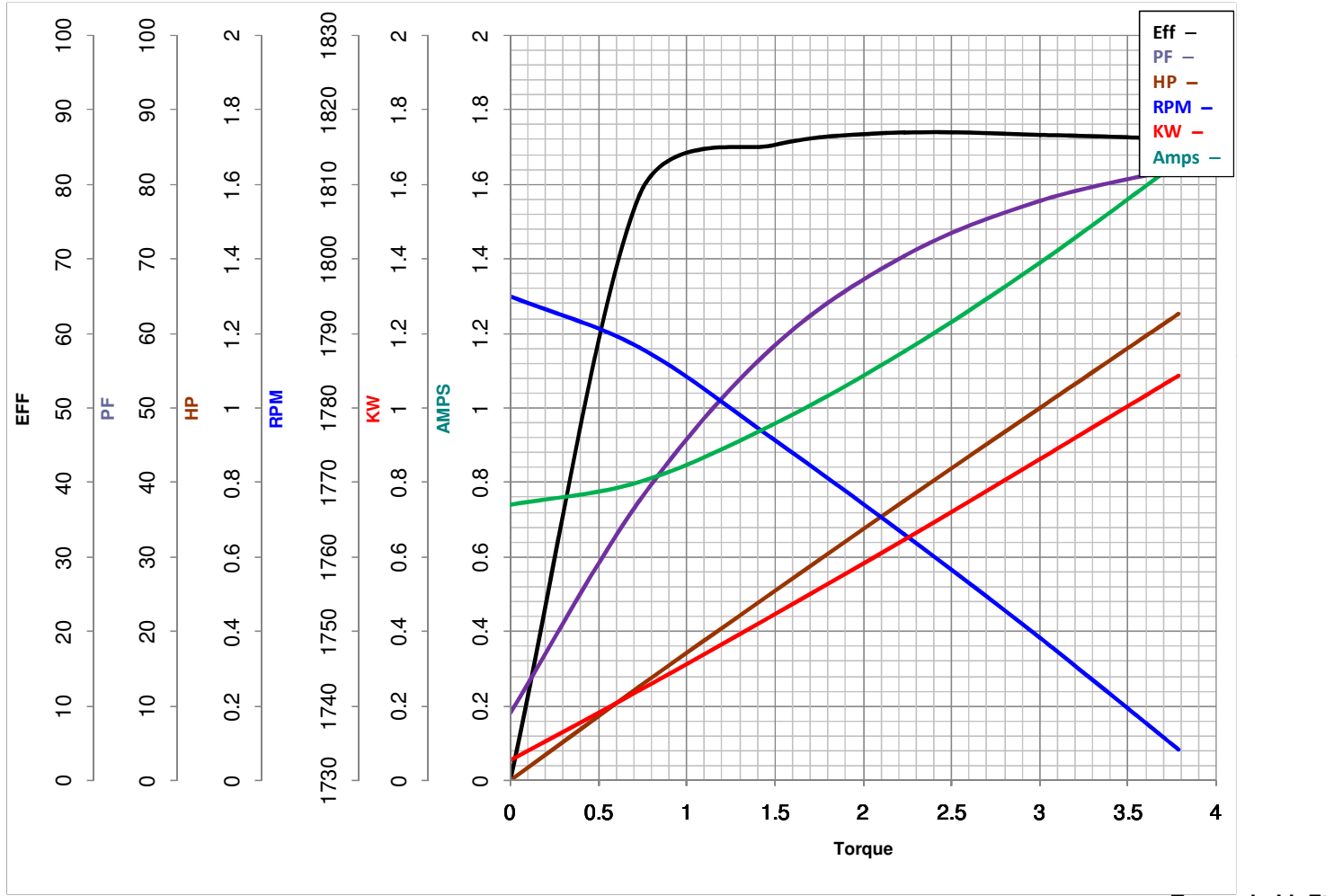
LEESON ELECTRIC CORPORATION
 TYPICAL PERFORMANCE CURVE for AC MOTOR

Model No 122192.00

Curve at 460 Volts HP 1.00 PHASE 3
60 HZ
1 HP VOLTS 208-230/460

Catalog No 122192.00

HZ 60 RPM 1750



Torque in Lb.Ft

FL TORQUE 3.003 Lb.Ft
 BD TORQUE 12.9 Lb.Ft
 LR TORQUE 10.38 Lb.Ft

FL AMPS 3-2.8/1.4
 PU TORQUE 11.4 Lb.Ft
 LR AMPS 12.43

WINDING T634471-3

Date 5/25/2018