

PRODUCT INFORMATION PACKET



Model No: 117888.00
Catalog No: 117888.00
0.5 HP Auger Drive Motor, 1 Phase 1800 RPM, 115/230 V, 56YZ Frame, TEFC
Auger Drive Motors



Regal and Leeson are trademarks of Regal Rexnord Corporation or one of its affiliated companies.
©2021 Regal Rexnord Corporation, All Rights Reserved. MC017097E





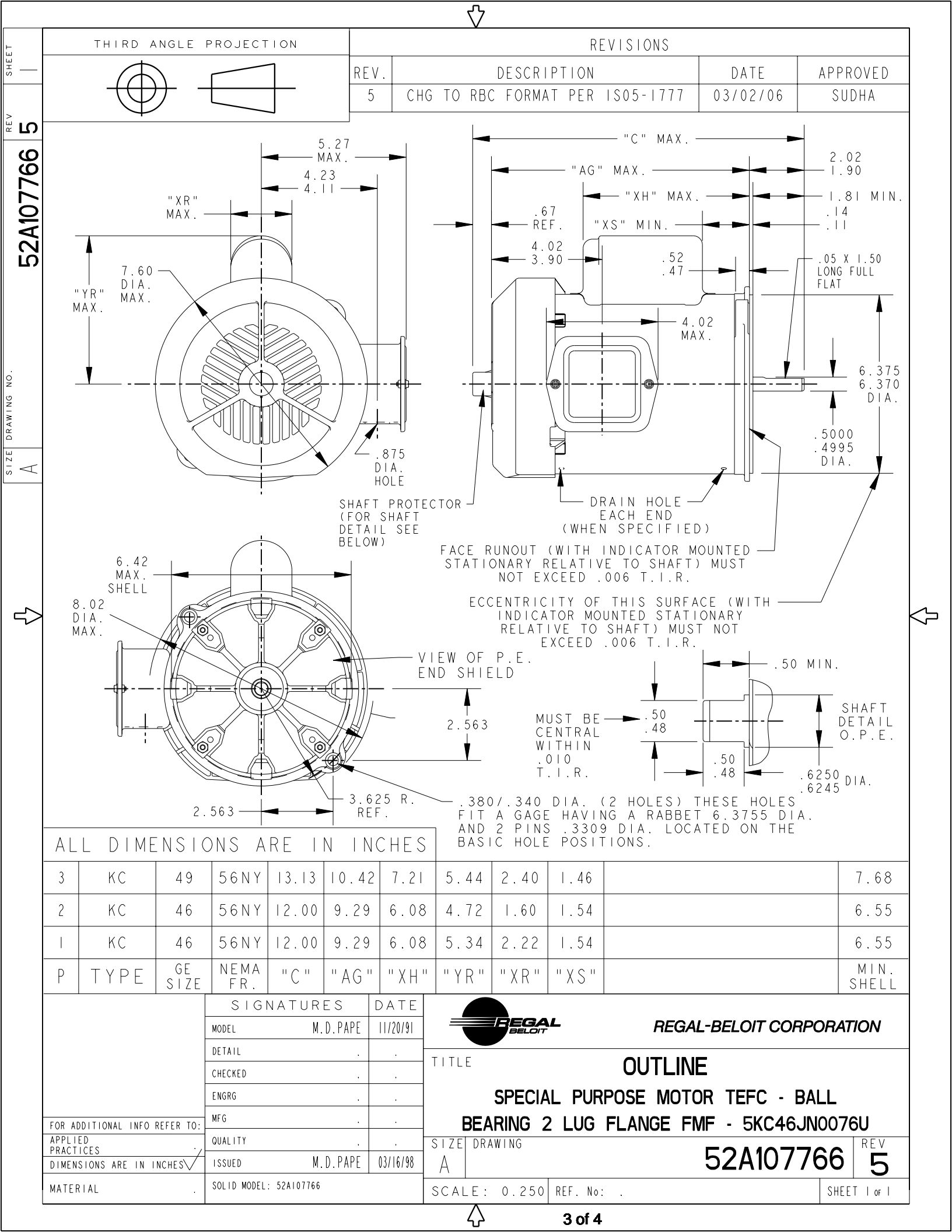
Nameplate Specifications

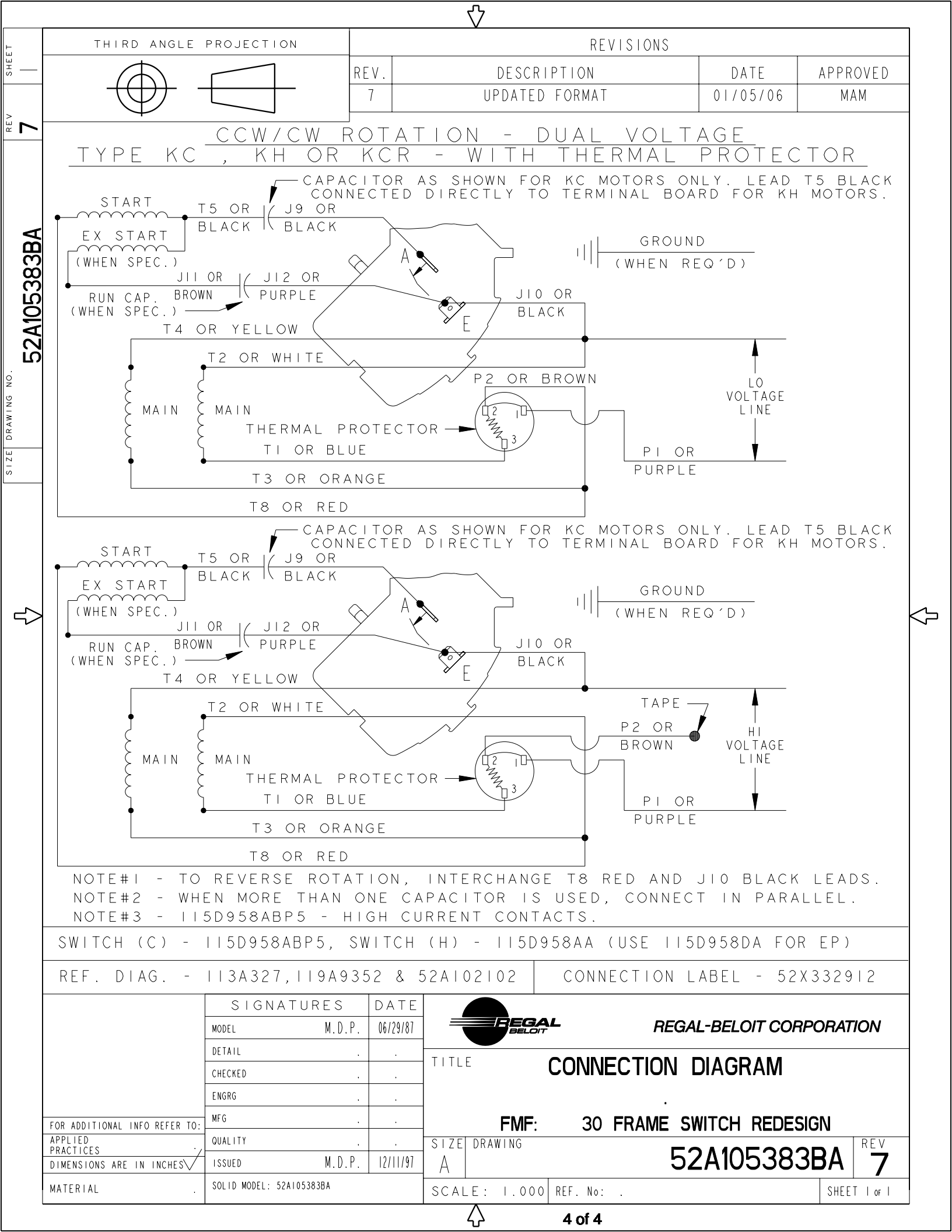
Output HP	0.50 Hp	Output KW	0.37 kW
Frequency	60 Hz	Voltage	115/208-230 V
Current	8.4/4.0-4.2 A	Speed	1725 rpm
Service Factor	1.25	Phase	1
Efficiency	59.9 %	Power Factor	70
Duty	Continuous	Insulation Class	B
KVA Code	M	Frame	56YZ
Enclosure	Totally Enclosed Fan Cooled	Thermal Protection	Manual
Ambient Temperature	40 °C	Drive End Bearing Size	6203
Opp Drive End Bearing Size	6203	CE	N
IP Code	43	Number of Speeds	1

Technical Specifications

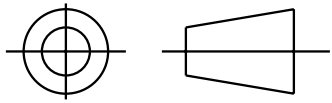
Electrical Type	Capacitor Start Induction Run	Starting Method	SM
Poles	4	Rotation	Counterclockwise/Clockwise
Mounting	N/R	Motor Orientation	Any
Drive End Bearing	Ball	Opp Drive End Bearing	Ball
Frame Material	Rolled Steel	Overall Length	12.00 in
Shaft Extension	.500 X 1.81 - 1.50 MIN LG CROSS MILLED FLAT in		
Connection Drawing	52A105383BA	Outline Drawing	52A107766P1

This is an uncontrolled document once printed or downloaded and is subject to change without notice. Date Created:10/07/2021





THIRD ANGLE PROJECTION



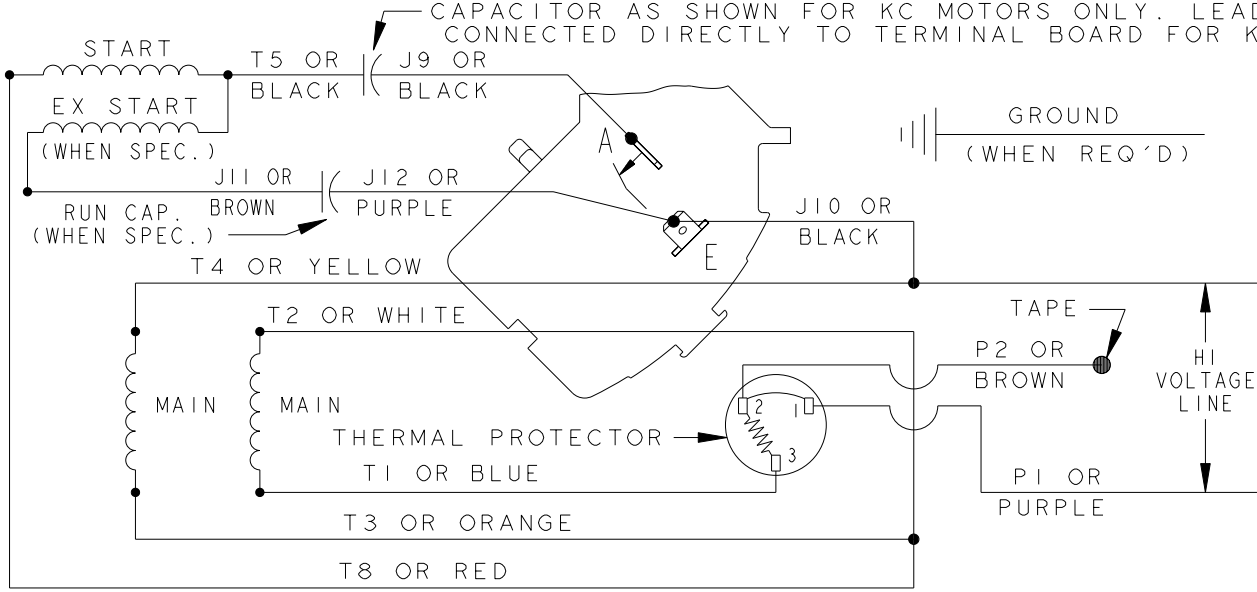
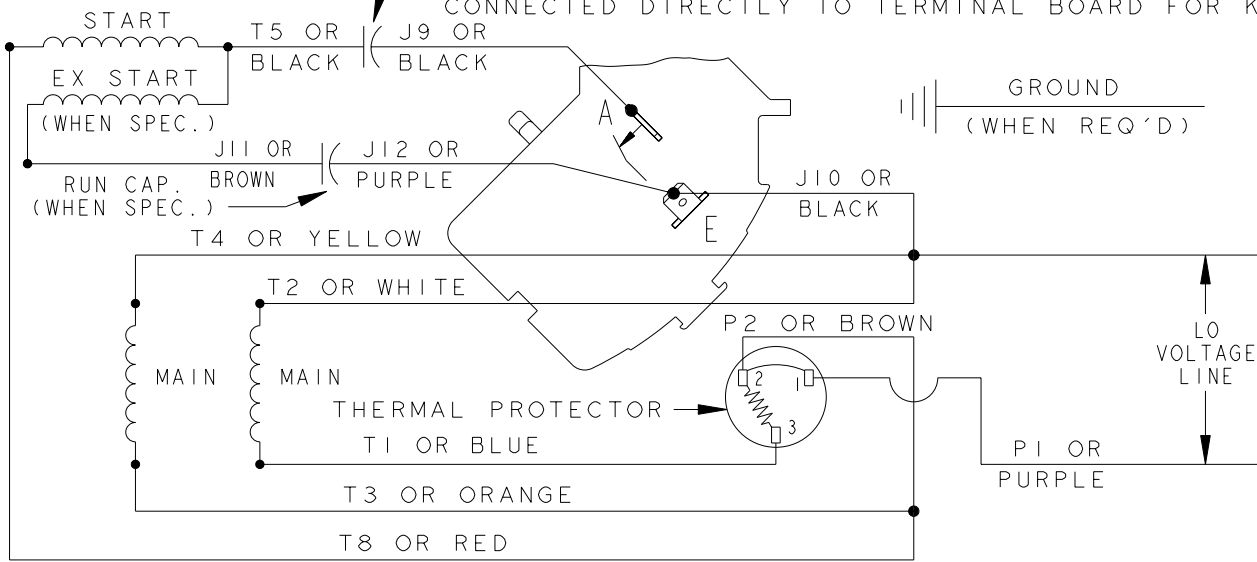
REVISIONS

REV.	DESCRIPTION	DATE	APPROVED
7	UPDATED FORMAT	01/05/06	MAM

CCW/CW ROTATION - DUAL VOLTAGE
TYPE KC , KH OR KCR - WITH THERMAL PROTECTOR

CAPACITOR AS SHOWN FOR KC MOTORS ONLY. LEAD T5 BLACK CONNECTED DIRECTLY TO TERMINAL BOARD FOR KH MOTORS.

52A105383BA



NOTE#1 - TO REVERSE ROTATION, INTERCHANGE T8 RED AND J10 BLACK LEADS.
 NOTE#2 - WHEN MORE THAN ONE CAPACITOR IS USED, CONNECT IN PARALLEL.
 NOTE#3 - 115D958ABP5 - HIGH CURRENT CONTACTS.

SWITCH (C) - 115D958ABP5, SWITCH (H) - 115D958AA (USE 115D958DA FOR EP)

REF. DIAG. - 113A327, 119A9352 & 52A102102 CONNECTION LABEL - 52X332912

SIGNATURES		DATE	<p>REGAL-BELOIT CORPORATION</p>	<p>TITLE</p> <p>CONNECTION DIAGRAM</p>
MODEL	M.D.P.	06/29/87		
DETAIL	.	.		
CHECKED	.	.		
ENGRG	.	.		
FOR ADDITIONAL INFO REFER TO:		MFG	<p>FMF: 30 FRAME SWITCH REDESIGN</p>	
APPLIED PRACTICES	QUALITY	.	SIZE	DRAWING
DIMENSIONS ARE IN INCHES ✓	ISSUED	M.D.P. 12/11/97	A	
MATERIAL	SOLID MODEL: 52A105383BA		SCALE: 1.000	REF. No. .
				<p>52A105383BA</p> <p>REV 7</p>
				SHEET 1 of 1