

# PRODUCT INFORMATION PACKET

Model No: 056B17F5307

Catalog No: F105

1.50 HP General Purpose Farm Duty Motor, 1 phase, 1800 RPM, 115/208-230 V, 56H Frame, TEFC  
General Purpose Farm Duty Motors



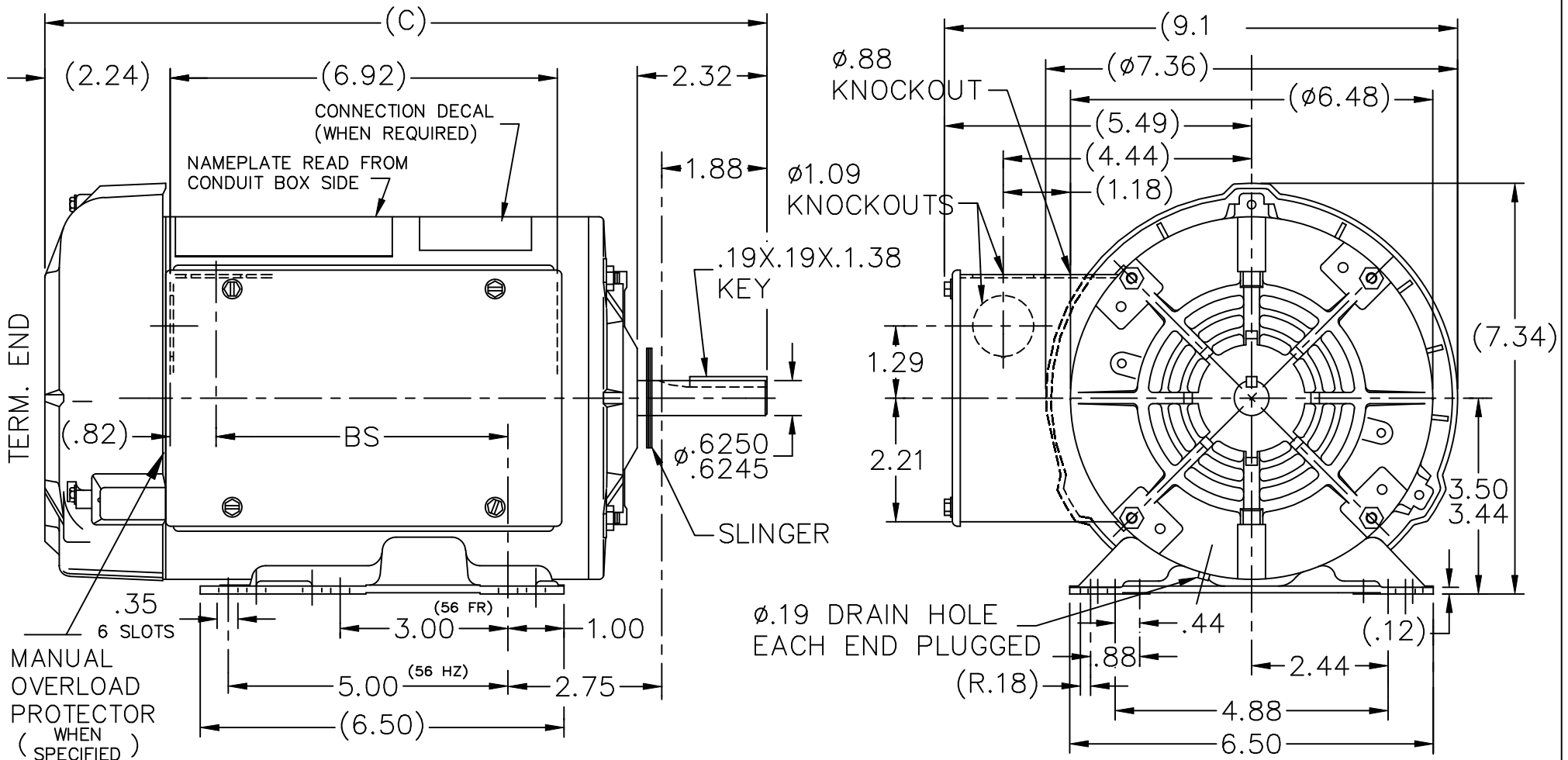
Regal and Marathon are trademarks of Regal Rexnord Corporation or one of its affiliated companies.  
©2021 Regal Rexnord Corporation, All Rights Reserved. MC017097E

### Nameplate Specifications

Output HP	<b>1.50 Hp</b>	Output KW	<b>1.1 kW</b>
Frequency	<b>60 Hz</b>	Voltage	<b>115/208-230 V</b>
Current	<b>15.2/8.2-7.6 A</b>	Speed	<b>1725 rpm</b>
Service Factor	<b>1.15</b>	Phase	<b>1</b>
Efficiency	<b>80 %</b>	Power Factor	<b>80</b>
Duty	<b>Continuous</b>	Insulation Class	<b>B</b>
Design Code	<b>L</b>	KVA Code	<b>J</b>
Frame	<b>56H</b>	Enclosure	<b>Totally Enclosed Fan Cooled</b>
Thermal Protection	<b>Manual</b>	Ambient Temperature	<b>40 °C</b>
Drive End Bearing Size	<b>6203</b>	Opp Drive End Bearing Size	<b>6203</b>
UL	<b>Recognized ( Not Protector)</b>	CSA	<b>Y</b>
CE	<b>N</b>	IP Code	<b>43</b>
Number of Speeds	<b>1</b>		

### Technical Specifications

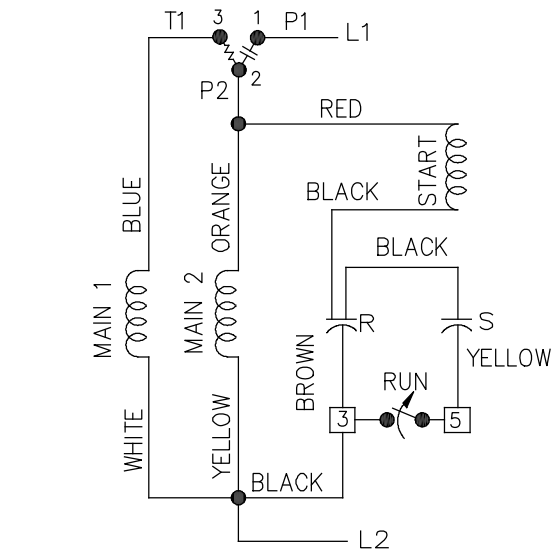
Electrical Type	<b>Capacitor Start Capacitor Run</b>	Starting Method	<b>Across The Line</b>
Poles	<b>4</b>	Rotation	<b>Selective Counterclockwise</b>
Resistance Main	<b>0 Ohms</b>	Mounting	<b>Rigid Base</b>
Motor Orientation	<b>Horizontal</b>	Drive End Bearing	<b>Ball</b>
Opp Drive End Bearing	<b>Ball</b>	Frame Material	<b>Rolled Steel</b>
Shaft Type	<b>T</b>	Overall Length	<b>13.82 in</b>
Frame Length	<b>8.56 in</b>	Shaft Diameter	<b>0.625 in</b>
Shaft Extension	<b>2.312 in</b>	Assembly/Box Mounting	<b>F1 ONLY</b>
Connection Drawing	<b>A-102006-52</b>	Outline Drawing	<b>A-100138-856</b>



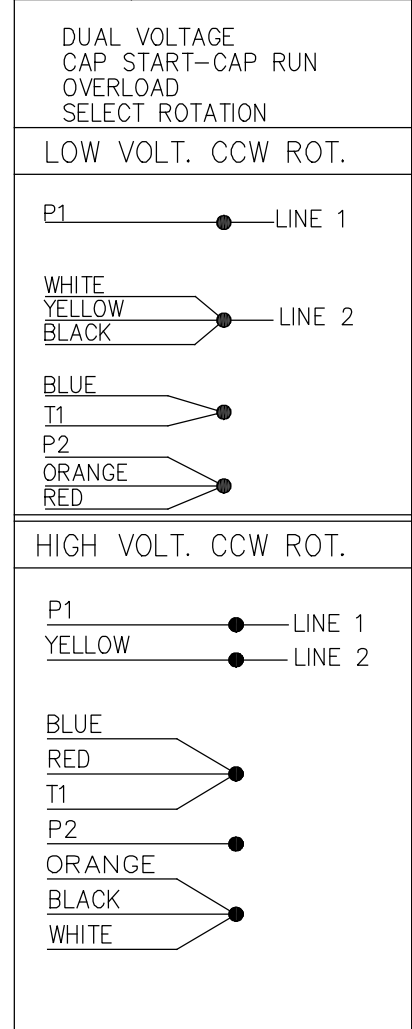
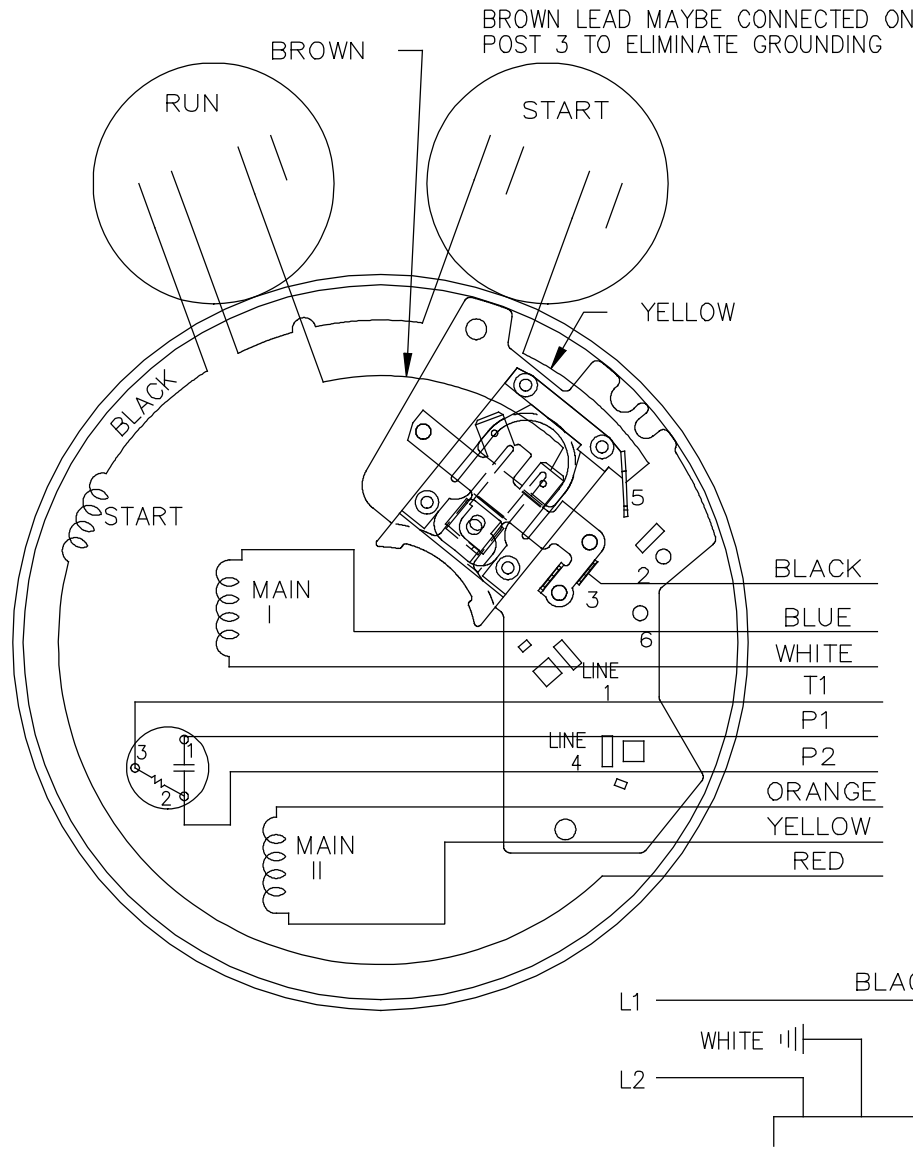
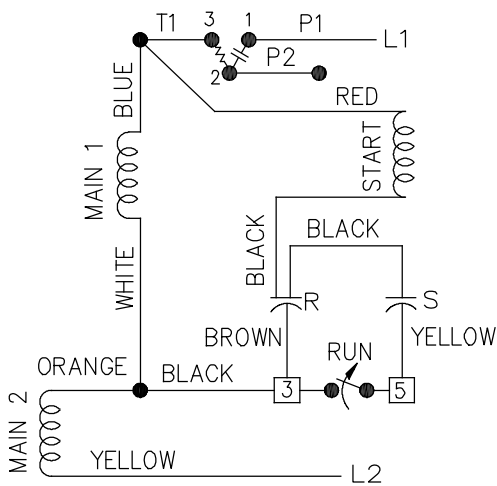
DASH	FR.	C	BS
856	56-85	13.82	6.14

				TOLERANCES UNLESS SPECIFIED			DRAWN ML 01-11-1992
				DEC.	INCHES		CHK GK 01-12-1992
				.X	±.1		APPD FG 01-12-1992
				.XX	±.03	TITLE OUTLINE	SCALE 3=8
4	REDRAWN IN AUTOCAD	TAT 06-13-2005	ML	.XXX	±.005	56 FR.-BB-TEFC-1Ø-MAN. PROT.	REF
3	REDRAWN ON CADD, ADDED CONN. DECAL	ML 01-12-1992		.XXXX	±.0005	MAT'L.	FMF
NO.	REVISION	BY & DATE	CHK	ANG	±7'30"	FINISH	PREV
THIS DRAWING IN DESIGN AND DETAIL IS OUR PROPERTY AND MUST NOT BE USED EXCEPT IN CONNECTION WITH OUR WORK ALL RIGHTS OF DESIGN AND INVENTION ARE RESERVED THIS IS AN ELECTRONICALLY GENERATED DOCUMENT - DO NOT SCALE THIS PRINT				RFP	CAD FILE 100138		SIZE A
				DIST WP			DRAWING NO. 100138
							PAGE OF 4
							REV. 4

LOW VOLTAGE C.C.W.



HIGH VOLTAGE C.C.W.



FOR CW ROT. EITHER VOLTAGE INTERCHANGE RED WITH BLACK LEAD.

14	UDATED LOGO TO REGAL	SN	01-09-2020	TOLERANCES UNLESS SPECIFIED		<b>Regal Beloit America, Inc.</b>	DRAWN ML 05-09-1992				
13	CHG'ED SWITCH TO OPEN WHEN RUNNING ISAAC 11-2715	KBB	06-23-2011	EH	DEC. INCHES		CHK GK 05-09-1992				
12	REMOVE 1,2,3 & 4 ON LOW & HIGH VOLT CN 31436	TJB	02-14-2002	DRS	.X ±.1	APPD FG 05-09-1992	SCALE 5=8				
11	REMOVE BRAKE VIEW CN 31436	TJB	01-30-2002	DRS	.XX ±.02	TITLE CONNECTION DIAGRAM	REF				
10	ADDED BROW LEAD DETAIL NOTE CN 24300-323	BJW	02-28-2000		.XXX ±.005		FMF				
9	ADDED CORD VIEW MU20434	BLR	07-01-1998		.XXXX ±.0005	MAT'L.	PREV				
NO.	REVISION	BY & DATE	CHK	ANG	±.7'30"	FINISH					
THIS DRAWING IN DESIGN AND DETAIL IS OUR PROPERTY AND MUST NOT BE USED EXCEPT IN CONNECTION WITH OUR WORK ALL RIGHTS OF DESIGN AND INVENTION ARE RESERVED THIS IS AN ELECTRONICALLY GENERATED DOCUMENT - DO NOT SCALE THIS PRINT						RFP	CAD FILE 102006-52	SIZE A	DRAWING NO. 102006-52	PAGE OF 14	REV. 14
						DIST WP					

**CERTIFICATION DATA SHEET**

**Model#:** 56B17F5307 H  
**CONN. DIAGRAM:** A-102006-52  
**OUTLINE:** A-100138-856

**WINDING#:** ZB406 NONE 3  
**ASSEMBLY:** F1 ONLY

**TYPICAL MOTOR PERFORMANCE DATA**

HP	KW	SYNC. RPM	F.L. RPM	FRAME	ENCLOSURE	KVA CODE	DESIGN
1 1/2	1.12	1800	1725	56H	TEFC	J	L

PH	Hz	VOLTS	FL AMPS	START TYPE	DUTY	INSL	S.F	AMB°C	ELEVATION
1	60	115/208-230	15.2/8.2-7.6	ACROSS THE LINE	CONTINUOUS	B3	1.15	40	3300

FULL LOAD EFF: 80	3/4 LOAD EFF: 80.5	1/2 LOAD EFF: 76.1	GTD. EFF	ELEC. TYPE	NO LOAD AMPS
FULL LOAD PF: 80	3/4 LOAD PF: 71.2	1/2 LOAD PF: 61	0	CAP START CAP RUN	8.1 / 4.1

F.L. TORQUE	LOCKED ROTOR AMPS	L.R. TORQUE	B.D. TORQUE	F.L. RISE°C
4.51 LB-FT	107.6 / 53.8	14.8 LB-FT 328	12.4 LB-FT 275	70

SOUND PRESSURE @ 3 FT.	SOUND POWER	ROTOR WK^2	MAX. WK^2	SAFE STALL TIME	STARTS / HOUR	APPROX. MOTOR WGT
0 dBA	10 dBA	0 LB-FT^2	0 LB-FT^2	0 SEC.	0	0 LBS.

**\*\*\* SUPPLEMENTAL INFORMATION \*\*\***

DE BRACKET TYPE	ODE BRACKET TYPE	MOUNT TYPE	ORIENTATION	SEVERE DUTY	HAZARDOUS LOCATION	DRIP COVER	SCREENS	PAINT
STANDARD	BRAKE	RIGID	HORIZONTAL	FALSE	NONE	FALSE	NONE	GRAY (POWDER)

BEARINGS		GREASE	SHAFT TYPE	SPECIAL DE	SPECIAL ODE	SHAFT MATERIAL	FRAME MATERIAL
DE	OPE						
BALL	BALL	POLYREX EM	T	NONE	NONE	1144 STRESSPROOF (C-223)	ROLLED STEEL
6203	6203						

THERMO-PROTECTORS				THERMISTORS	CONTROL	SPACE /n HEATERS
THERMOSTATS	PROTECTORS	WDG RTDs	BRG RTDs			
NONE	MANUAL	NONE	NONE	NONE	FALSE	NONE VOLTS

If Inverter equals NONE, contact factory for further information

\*  
N  
O  
T  
E  
S  
\*

INVERTER TORQUE: NONE
INV. HP SPEED RANGE: NONE
ENCODER: NONE
NONE NONE
NONE NONE PPR
BRAKE: PROVISIONS FOR KIT NONE
NONE P/N NONE
NONE NONE
NONE FT-LB NONE V NONE Hz

DATE: 06/27/2017 05:52:09 AM  
 FORM 3531 REV.3 02/07/99  
 \*\* Subject to change without notice.



**MARATHON ELECTRIC CORPORATION**  
TYPICAL PERFORMANCE CURVE for AC MOTOR

Customer

Curve at

460 Volts  
60 HZ  
1.5 HP

HP 1.50

PHASE 1

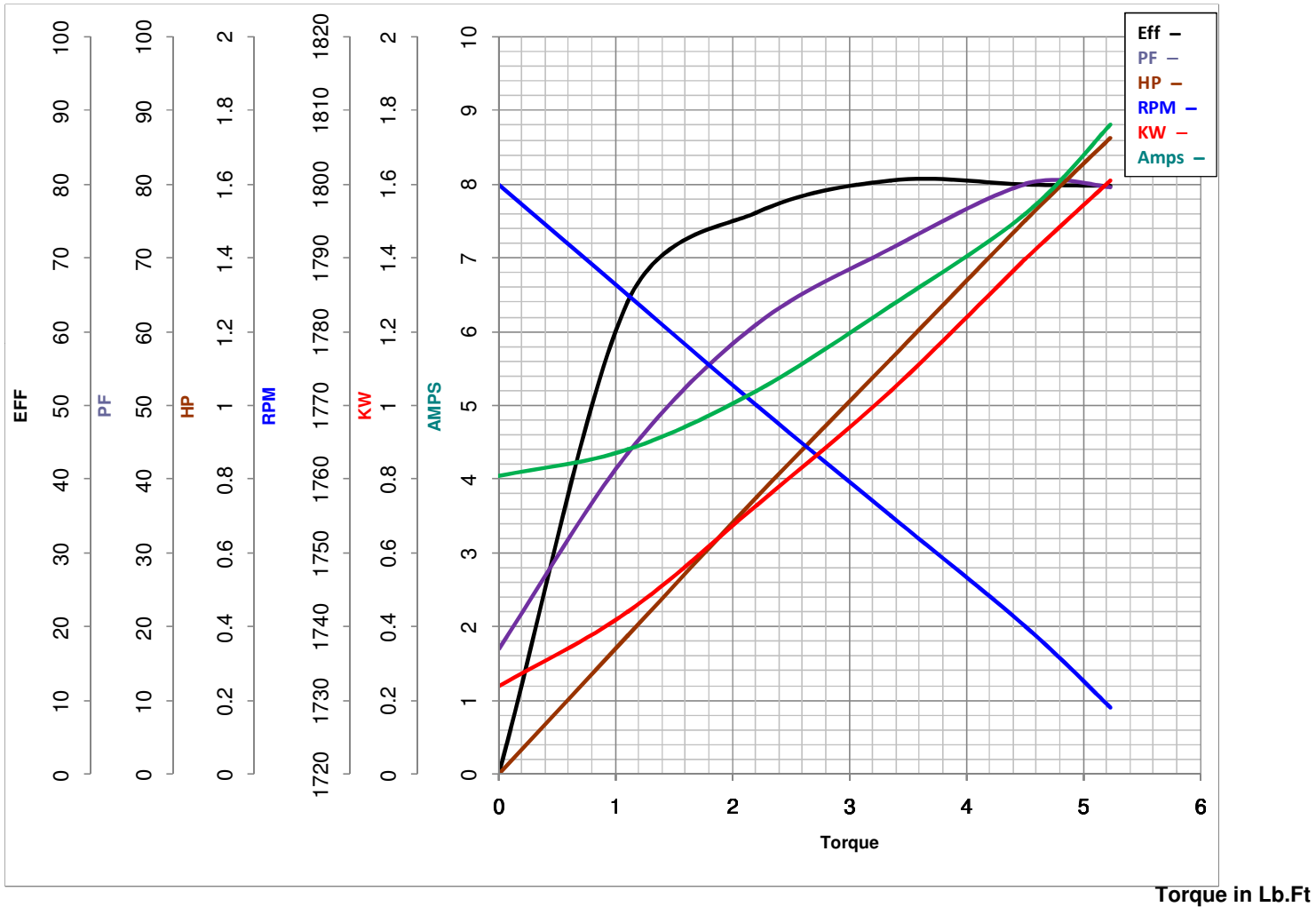
Model No 56B17F5307

VOLTS 115/208-230

Catalog No F105

HZ 60

RPM 1725



<b>FL TORQUE</b>	<u>4.51</u>	Lb.Ft	<b>FL AMPS</b>	<u>15.2/8.2-7.6</u>
<b>BD TORQUE</b>	<u>12.4</u>	Lb.Ft	<b>PU TORQUE</b>	<u>12.6</u> Lb.Ft
<b>LR TORQUE</b>	<u>14.8</u>	Lb.Ft	<b>LR AMPS</b>	<u>53.8</u>
<b>WINDING</b>	ZB406-3		<b>Date</b>	1/17/2019